

2.0inch Arduino SPI Module MAR2001 User Manual

Product Description

This product is a 2.0 inch LCD display module. It has 176x220 resolution, supports 16BIT RGB 65K color display, and the internal driver IC is ILI9225, which uses 4-wire SPI communication. The module contains an LCD display and a PCB control backplane.

Product Features

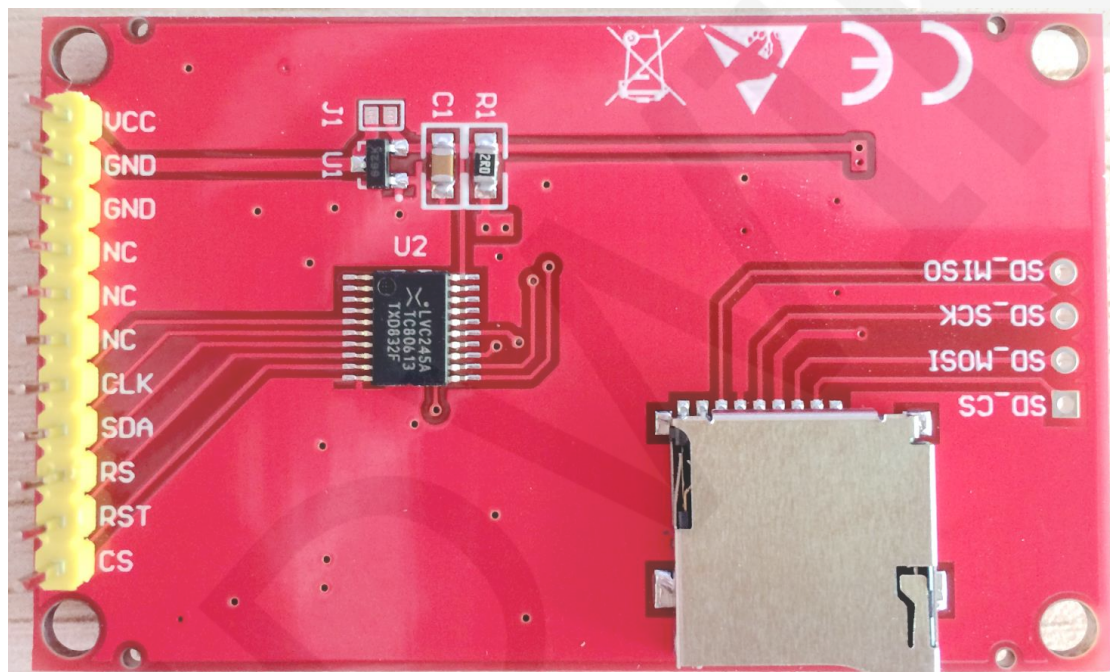
- 2.0-inch color screen, support 65K color display, display rich colors
- 176X220 resolution, clear display
- Using the SPI serial bus, it only takes a few IOs to illuminate the display
- With SD card slot for convenient function expansion
- Provide underlying libraries and rich sample programs for Arduino, C51, and STM32 platforms
- Military-grade process standards, long-term stable work
- Provide underlying driver technical support

Product Parameters

Name	Description
Display Color	16BIT RGB 65K color
SKU	MAR2001
Screen Size	2.0(inch)
Type	TFT
Driver IC	ILI9225
Resolution	176*220 (Pixel)
Module Interface	4-wire SPI interface
Backlight	3 White Led
Active Area	31.68x39.60 (mm)
Module PCB Size	38.30x62.48 (mm)

Angle of view	$\leq 60^\circ$
Operating Temperature	$-10^\circ\text{C} \sim 60^\circ\text{C}$
Storage Temperature	$-20^\circ\text{C} \sim 70^\circ\text{C}$
Operating Voltage	3.3V / 5V
Power Consumption	About 90mA
Product Weight	About 25(g)

Interface Description



Picture1. Pin silkscreen picture

Number	Module Pin	Pin Description
1	VCC	LCD power supply positive pin
2	GND	LCD Power ground pin pin
3	GND	LCD Power ground pin pin
4	NC	Not defined, reserved
5	NC	Not defined, reserved
6	NC	Not defined, reserved

7	CLK	LCD SPI bus clock pin
8	SDA	LCD SPI bus write data pin
9	RS	LCD data / command selection control pin (low level: command; high level: data)
10	RST	LCD reset control pin (reset at low level)
11	CS	LCD chip select control pin (enabled at low level)
12	SD_CS	SD card SPI bus chip select pin (SD card function expansion application)
13	SD_MOSI	SD card SPI bus write data pin (SD card function extension application)
14	SD_SCK	SD card SPI bus clock pin (SD card function expansion application)
15	SD_MISO	SD card SPI bus read data pin (SD card function expansion application)

Description:

1. When manually wiring, reduce the occupied IO port of the development board as follows:
 - A. When the SPI multiplexed chip is not selected, ground the **CS** pin of the module to save 1 IO port;
 - B. Connect the **RST** pin of the module to the reset end of the MCU to save 1 IO port;
2. Short-circuit the J1 pad on the PCB backplane, then **VCC** is connected with 3.3V voltage at this time. Never connect it to 5V, it will burn out;

Hardware Configuration

The LCD module hardware circuit comprises two parts: an LCD display control circuit and a backlight control circuit.

The LCD display control circuit is used to control the pins of the LCD, including control pins and data transfer pins.

A level shifting circuit is used to control the level shifting, converting the input 5V to a 3.3V output.

working principle

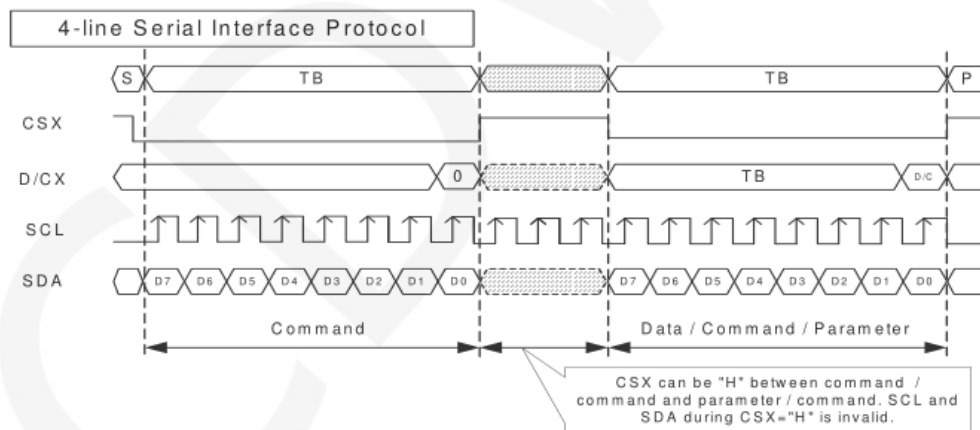
1. Introduction to ILI9225 Controller

The ILI9225 controller supports a maximum resolution of 176*220 and a 87120-byte GRAM. It also supports 8-bit, 9-bit, 16-bit, and 18-bit parallel port data buses. It also supports 3-wire and 4-wire SPI serial ports. Since parallel control requires a large number of IO ports, the most common one is SPI serial port control. The ILI9225 also supports 65K, 262K RGB color display, display color is very rich, while supporting rotating display and scroll display and video playback, display in a variety of ways.

The ILI9225 controller uses 16bit (RGB565) to control the color display of a pixel of the display module, so it can display up to 65K colors per pixel. The pixel address setting is performed in the order of rows and columns, and the incrementing and decreasing direction is determined by the scanning mode. The ILI9225 display method is performed by setting the address and then setting the color value.

2. Introduction to SPI communication protocol

The 4-wire SPI bus write mode timing is shown in the following figure:



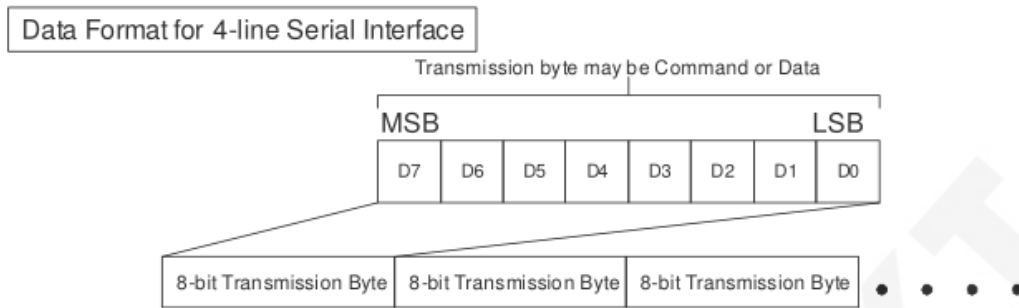
CSX is a slave chip select, and the chip is enabled only when CSX is low.

D/CX is the data/command control pin of the chip. When DCX is low, the command is written. When it is high, the data is written.

SCL is the SPI bus clock, and each rising edge transmits 1 bit of data;

SDA is the data transmitted by SPI, and it transmits 8-bit data at a time. The data format

is as shown below:



The high position is in front and transmitted first.

For SPI communication, the data has a transmission timing, that is, a combination of clock phase (CPHA) and clock polarity (CPOL):

The CPOL level determines the idle state level of the serial synchronous clock, CPOL = 0, which is low. CPOL does not have a lot of impact on the transport protocol;

The level of CPHA determines whether the serial synchronous clock is acquired on the first clock transition edge or the second clock transition edge.

When CPHL = 0, data acquisition is performed on the first edge of the transition;

The combination of the two becomes the four SPI communication methods. SPI0 is usually used in China, that is, CPHL = 0, CPOL = 0.

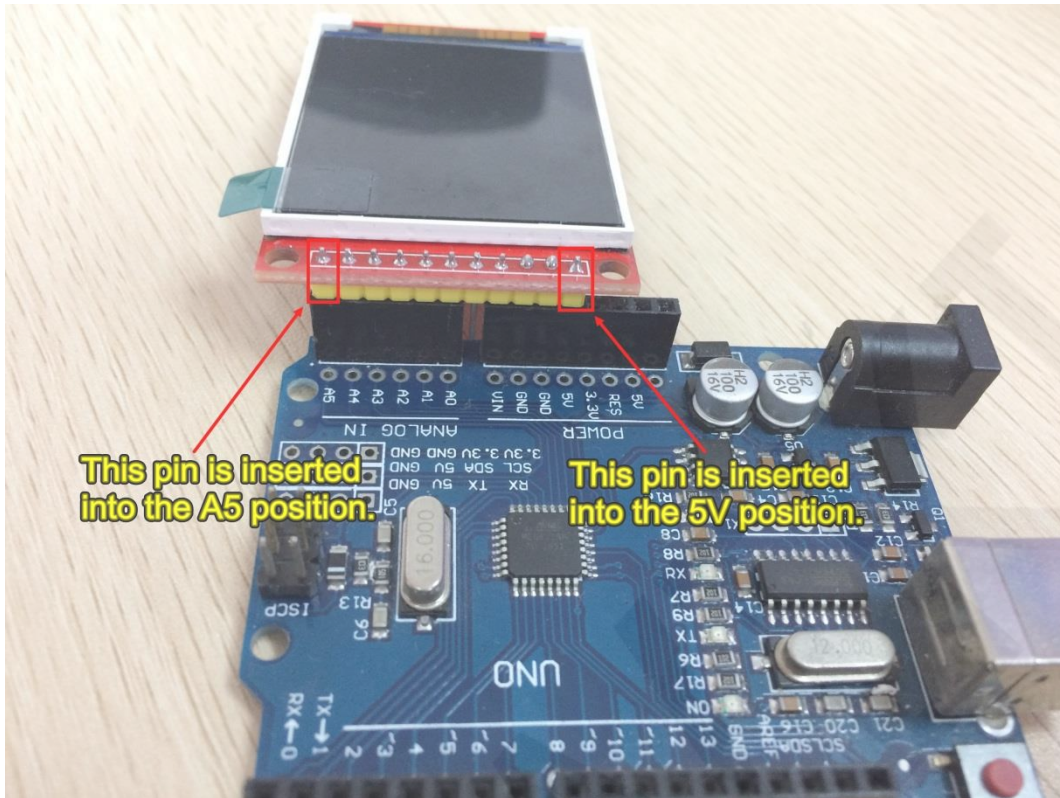
Instructions for use

1. Arduino instructions

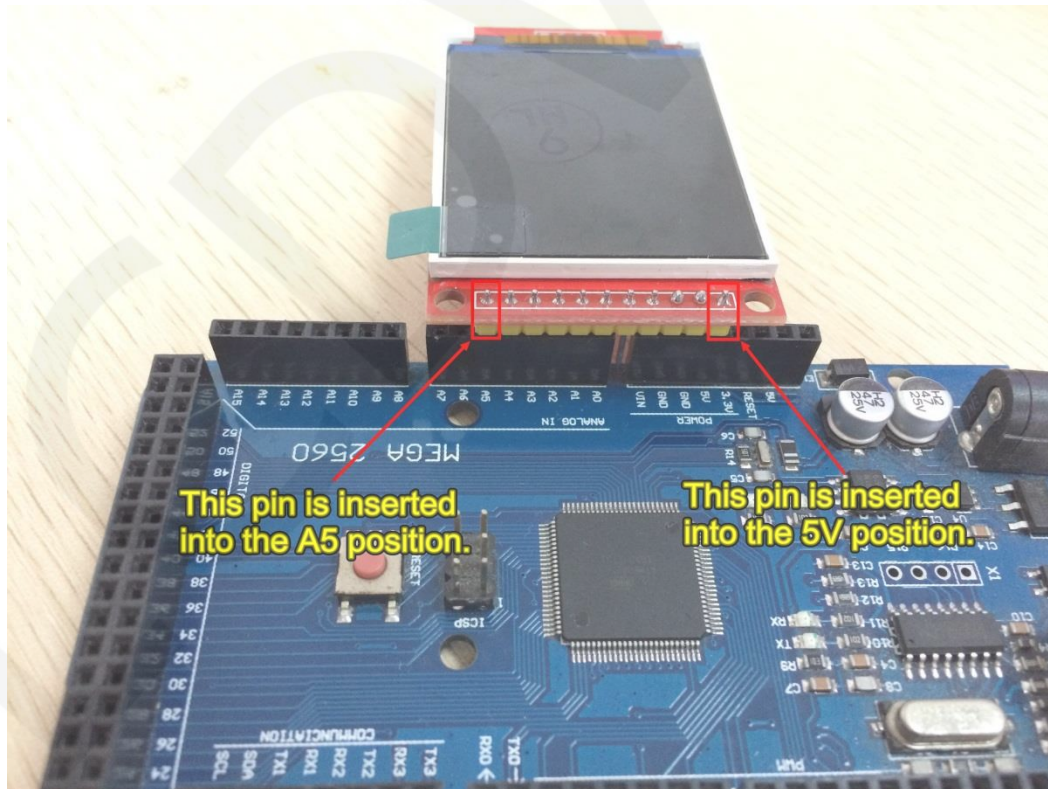
Wiring instructions:

When using the software SPI test program, the display module can be plugged directly into the Arduino UNO and Mega2560 development boards without manual wiring (as shown in Picture 2 and 3).

When using the hardware SPI test program, the display module needs to be manually connected to the Arduino UNO and Mega2560 development boards using the DuPont line.



Picture 2. Module directly inserted into the Arduino UNO picture



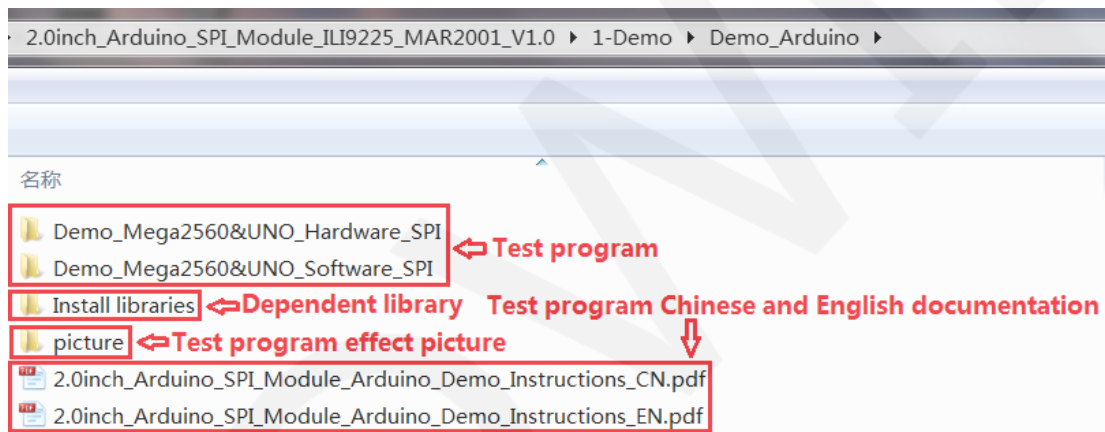
Picture 3. Module directly inserted into the Arduino Mega2560 picture

Arduino UNO microcontroller test program wiring			
Number	Module Pin	Corresponding to UNO development board wiring pins	
1	VCC	5V/3.3V	
2	GND	GND	
3	GND	GND	
4	NC	no need to connect	
5	NC	no need to connect	
6	NC	no need to connect	
7	CLK	software SPI	A1
		hardware SPI	13
8	SDA	software SPI	A2
		hardware SPI	11
9	RS	A3	
10	RST	A4	
11	CS	A5	

Arduino MEGA2560 microcontroller test program wiring			
Number	Module Pin	Corresponding to MEGA2560 development board wiring pins	
1	VCC	5V/3.3V	
2	GND	GND	
3	GND	GND	
4	NC	no need to connect	
5	NC	no need to connect	
6	NC	no need to connect	
7	CLK	software SPI	A1
		hardware SPI	52
8	SDA	software SPI	A2
		hardware SPI	51
9	RS	A3	
10	RST	A4	
11	CS	A5	

Operating Steps:

- A. Connect the LCD module (as shown in Picture 1) and the Arduino MCU according to the above wiring instructions, and power on;
- B. Copy the dependent libraries in the **Install libraries** directory of the test package to the **libraries** folder of the Arduino project directory (if you do not need to depend on the libraries, you do not need to copy them);
- C. Open the directory where the Arduino test program is located and select the example you want to test, as shown below:
(Please refer to the test program description document in the test package for the test program description)



- D. Open the selected sample project, compile and download.

The specific operation methods for the Arduino test program relying on library copy, compile and download are as follows:

http://www.lcdwiki.com/res/PublicFile/Arduino_IDE_Use_Illustration_EN.pdf

- E. If the LCD module displays characters and graphics normally, the program runs successfully;

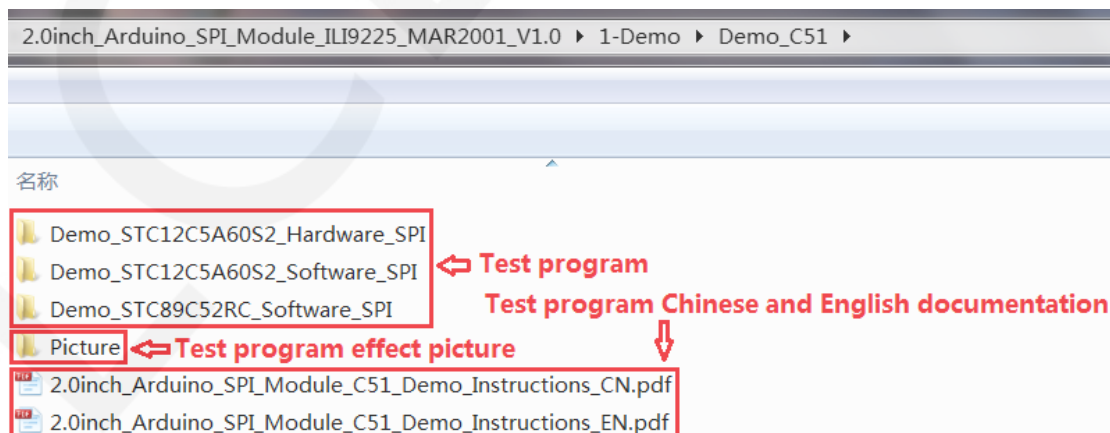
2. C51 instructions

Wiring instructions:

STC89C52RC and STC12C5A60S2 microcontroller test program wiring instructions		
Number	Module Pin	Corresponding to STC89/STC12 development board wiring pin
1	VCC	5V/3.3V
2	GND	GND
3	GND	GND
4	NC	no need to connect
5	NC	no need to connect
6	NC	no need to connect
7	CLK	P17
8	SDA	P15
9	RS	P12
10	RST	P33
11	CS	P13

Operating Steps:

- A. Connect the LCD module(as shown in Picture 1) and the C51 MCU according to the above wiring instructions, and power on;
- B. Select the C51 test program to be tested, as shown below:
(Please refer to the test program description document in the test package for the test program description)



- C. Open the selected test program project, compile and download;

detailed description of the C51 test program compilation and download can be found in the following document:

http://www.lcdwiki.com/res/PublicFile/C51_Keil%26stc-isp_Use_Illustration_EN.pdf

- D. If the LCD module displays characters and graphics normally, the program runs successfully;

3. STM32 instructions

Wiring instructions:

Because the pin positions of different development boards are different, and the external pins are reserved differently (some development boards do not have externally required pins). In order to facilitate wiring, the wiring pins of each development board are inconsistent.

STM32F103RCT6 microcontroller test program wiring instructions		
Number	Module Pin	Corresponding to MiniSTM32 development board wiring pin
1	VCC	5V/3.3V
2	GND	GND
3	GND	GND
4	NC	no need to connect
5	NC	no need to connect
6	NC	no need to connect
7	CLK	PB13
8	SDA	PB15
9	RS	PB10
10	RST	PB12
11	CS	PB11

STM32F103ZET6 microcontroller test program wiring instructions

Number	Module Pin	Corresponding to Elite STM32 development board wiring pin
1	VCC	5V/3.3V
2	GND	GND
3	GND	GND
4	NC	no need to connect
5	NC	no need to connect
6	NC	no need to connect
7	CLK	PB13
8	SDA	PB15
9	RS	PB10
10	RST	PB12
11	CS	PB11

STM32F407ZGT6 microcontroller test program wiring instructions

Number	Module Pin	Corresponding to Explorer STM32F4 development board wiring pin
1	VCC	5V/3.3V
2	GND	GND
3	GND	GND
4	NC	no need to connect
5	NC	no need to connect
6	NC	no need to connect
7	CLK	PB3

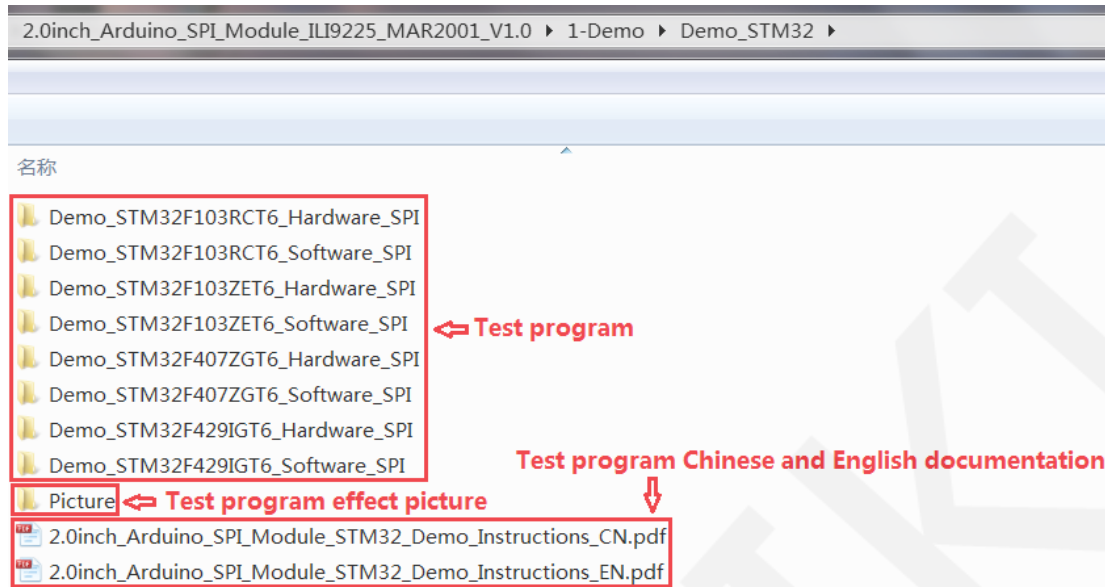
8	SDA	PB5
9	RS	PB14
10	RST	PB12
11	CS	PB15

STM32F429IGT6 microcontroller test program wiring instructions

Number	Module Pin	Corresponding to Apollo STM32F4/F7 development board wiring pin
1	VCC	5V/3.3V
2	GND	GND
3	GND	GND
4	NC	no need to connect
5	NC	no need to connect
6	NC	no need to connect
7	CLK	PF7
8	SDA	PF9
9	RS	PD5
10	RST	PD12
11	CS	PD11

Operating Steps:

- A. Connect the LCD module(as shown in Picture 1) and the STM32 MCU according to the above wiring instructions, and power on;
- B. Select the test example according to the model of the microcontroller, as shown in the following figure:
(Please refer to the test program description document in the test package for the test program description)



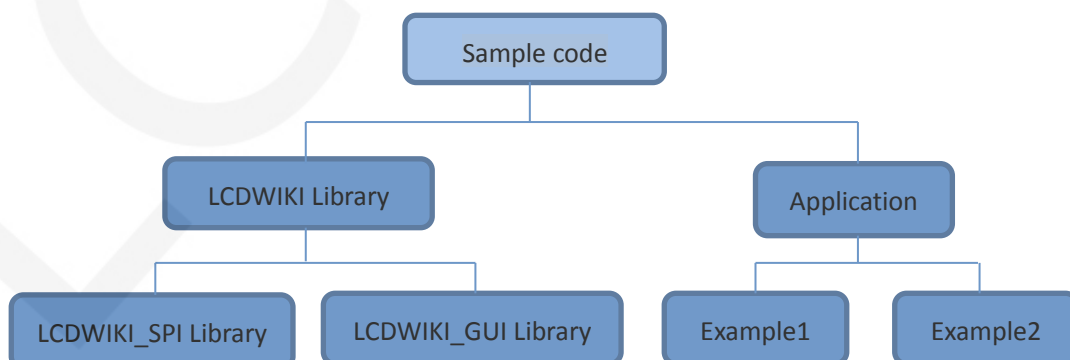
- C. Open the selected test program project, compile and download;
detailed description of the STM32 test program compilation and download can be found in the following document:
http://www.lcdwiki.com/res/PublicFile/STM32_Keil_Use_Illustration_EN.pdf
- D. If the LCD module displays characters and graphics normally, the program runs successfully;

Software Description

1. Code Architecture

A. Arduino code architecture description

The code architecture is shown below:



Arduino's test program code consists of two parts: the LCDWIKI library and

application code.

The LCDWIKI library consists of two parts: the LCDWIKI_SPI library and the LCDWIKI_GUI library.

The application contains several test examples, each of which contains different test content.

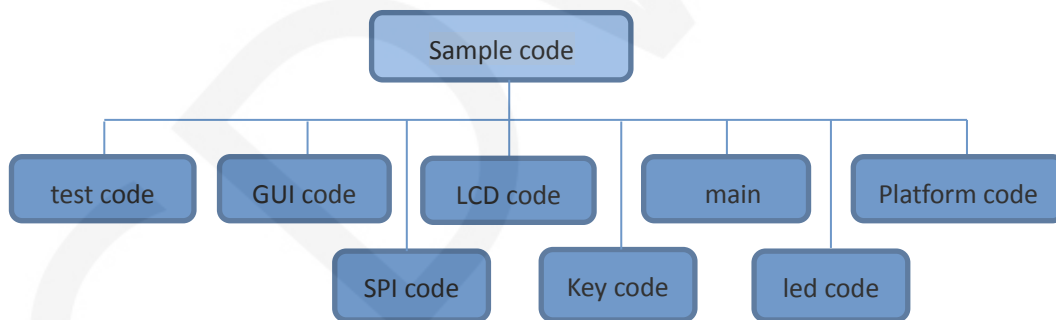
LCDWIKI_SPI is the underlying library, which is associated with hardware. It is mainly responsible for operating registers, including hardware module initialization, data and command transmission, pixel coordinates and color settings, and display mode configuration.

LCDWIKI_GUI is a middle-tier library, which is responsible for drawing graphics and displaying characters using the API provided by the underlying library.

The application uses the API provided by the LCDWIKI library to write some test examples to implement some aspects of the test function.

B. C51 and STM32 code architecture description

The code architecture is shown below:



The Demo API code of the main program runtime is included in the test code;

LCD initialization and related operations are included in the LCD code;

Drawing points, lines, graphics, and Chinese and English character display related operations are included in the GUI code;

The main function implements the application to run;

Platform code varies by platform;

SPI initialization and configuration related operations are included in the SPI

code(C51's SPI code is placed in the LCD code);

The key processing related code is included in the key code (the C51 platform does not have a button processing code);

The code related to the led configuration operation is included in the led code;

2. software SPI and hardware SPI description

The LCD module provides software SPI and hardware SPI sample code (except STC89C52RC, because it does not have hardware SPI function), the two sample code does not make any difference in the display content, but the following aspects are different:

A. display speed

The hardware SPI is significantly faster than the software SPI, which is determined by the hardware.

B. GPIO definition

The software SPI all control pins must be defined, any idle pin can be used, the hardware SPI data and clock signal pins are fixed (depending on the platform), other control pins should be defined by themselves, or any idle reference can be used. foot.

C. initialization

When the software SPI is initialized, only the GPIO for pin definition needs to be initialized (not required by the C51 platform). When the hardware SPI is initialized, the relevant control registers and data registers need to be initialized.

3. GPIO definition description

A. Arduino test program GPIO definition description

The GPIO definitions for the Arduino test program are placed separately in each application. As shown in the figure below (take the software SPI test program as an example):


```
//paramters define
#define MODEL ILI9225
#define CS    A5
#define CD    A3
#define RST   A4
#define SDA   A2
#define SCK   A1
#define LED   -1 //if you don't need to control the
```

When using the Arduino software SPI test program, the GPIO definition cannot be modified because the module can be plugged directly into the Arduino development board.

When using the Arduino hardware SPI test program, the SDA and SCK pins cannot be modified (it is defined by the system and need not be defined), and other GPIOs can be flexibly defined according to requirements.

B. C51 test program GPIO definition description

C51 test program GPIO definition is placed in the lcd.h file, as shown below(Taking the STC12C5A60S2 software SPI test program as an example):

```
//IO连接
sbit LCD_RS = P1^2; //数据/命令切换
sbit LCD_SDI = P1^5; //SPI写
//sbit LCD_SDO = P1^6; //SPI读
sbit LCD_CS = P1^3; //片选
sbit LCD_CLK = P1^7; //SPI时钟
sbit LCD_RESET = P3^3; //复位
//sbit LCD_BL=P3^2; //背光控制，如果不需要控制，接3.3V
```

If the software SPI is used, all pin definitions can be modified and can be defined as any other free GPIO.

If hardware SPI is used, the LCD_BL, LCD_RS, LCD_CS, and LCD_RST pins can be defined as any other free GPIO. The LCD_CLK and LCD_SDI pins cannot be modified (they are defined by the system and do not need to be defined).

C. STM32 test program GPIO definition description

The STM32's LCD non-SPI GPIO definition is placed in lcd.h as shown below(Taking the STM32F103RCT6 software test program as an example):

```
//-----LCD端口定义-----
#define GPIO_TYPE  GPIOB  //GPIO组类型
//#define LED      9      //背光控制引脚          PB9
#define LCD_CS     11     //片选引脚          PB11
#define LCD_RS     10     //寄存器/数据选择引脚 PB10
#define LCD_RST    12     //复位引脚          PB12
```

All pin definitions can be modified and can be defined as any other free GPIO.

The GPIO definition of the STM32 LCD SPI is placed in spi.h as shown below(Taking the STM32F103RCT6 software test program as an example):

```
#define LCD_CTRL      GPIOB  //定义TFT数据端口
#define SPI_SCLK      GPIO_Pin_13 //PB13--->>TFT --SCL/SCK
#define SPI_MISO      GPIO_Pin_14
#define SPI_MOSI      GPIO_Pin_15 //PB15 MOSI--->>TFT --SDA/DIN
```

If the software SPI is used, all pin definitions can be modified and can be defined as any other free GPIO.

If the hardware SPI is used, these pins cannot be modified (it is defined by the system and need not be defined). At the same time, the SPI_SCLK, SPI_MISO and SPI_MOSI pins must be initialized and removed in the LCD_GPIOInit function in the lcd.c file, as shown in the figure below. (Taking the STM32F103RCT6 software test program as an example):

```
void LCD_GPIOInit(void)
{
    GPIO_InitTypeDef  GPIO_InitStructure;

    RCC_APB2PeriphClockCmd( RCC_APB2Periph_GPIOB ,ENABLE);

    GPIO_InitStructure.GPIO_Pin = GPIO_Pin_9| GPIO_Pin_10| GPIO_Pin_11| GPIO_Pin_12| GPIO_Pin_13|GPIO_Pin_15;
    GPIO_InitStructure.GPIO_Speed = GPIO_Speed_50MHz;
    GPIO_InitStructure.GPIO_Mode = GPIO_Mode_Out_PP;    //推挽输出
    GPIO_Init( GPIOB, &GPIO_InitStructure);

    GPIO_InitStructure.GPIO_Pin = GPIO_Pin_14;
    GPIO_InitStructure.GPIO_Mode = GPIO_Mode_IPU;
    GPIO_InitStructure.GPIO_Speed = GPIO_Speed_50MHz;
    GPIO_Init( GPIOB, &GPIO_InitStructure);
}
```

The contents of the red circle must be removed.

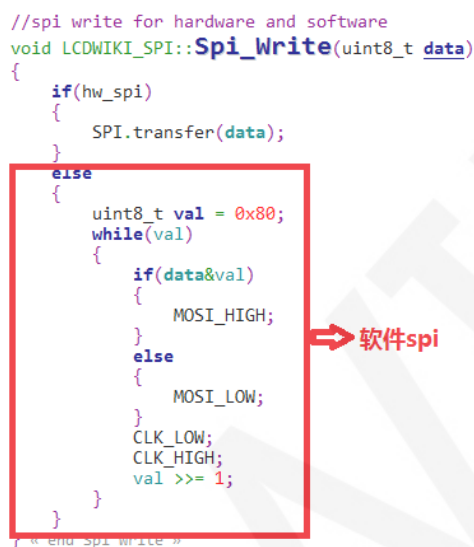
4. SPI communication code implementation

A. Arduino test program SPI communication code implementation

Hardware SPI communication is implemented by the system. We only need to operate the register and call the relevant function. For details, please refer to the MCU related documentation.

The software SPI communication code is implemented in the LCDWIKI_SPI.cpp file of the LCDWIKI_SPI library, as shown below:

```
//spi write for hardware and software
void LCDWIKI_SPI::Spi_Write(uint8_t data)
{
    if(hw_spi)
    {
        SPI.transfer(data);
    }
    else
    {
        uint8_t val = 0x80;
        while(val)
        {
            if(data&val)
            {
                MOSI_HIGH;
            }
            else
            {
                MOSI_LOW;
            }
            CLK_LOW;
            CLK_HIGH;
            val >>= 1;
        }
    }
}
// end spi_write
```



If the transmitted data bit is 1, the SPI data pin is pulled high. When it is 0, the SPI data pin is pulled low, one byte of data is transferred each time, the upper bit is first, and one bit of data is transmitted on each rising edge of the clock.

B. STM32 test program SPI communication code implementation

Hardware SPI communication is implemented by the system. We only need to operate the register and call the relevant function. For details, please refer to the MCU related documentation.

The software SPI communication code is implemented in spi.c respectively, as shown in the following figure:

```
void SPIv_WriteData(u8 Data)
{
    unsigned char i=0;
    for(i=8;i>0;i--)
    {
        if(Data&0x80)
            SPI_MOSI_SET; //输出数据
        else SPI_MOSI_CLR;

        SPI_SCLK_CLR;
        SPI_SCLK_SET;
        Data<<=1;
    }
}
```

If the transmitted data bit is 1, the SPI data pin is pulled high. When it is 0, the SPI data pin is pulled low, one byte of data is transferred each time, the upper bit is first, and one bit of data is transmitted on each rising edge of the clock.

C. C51 test program SPI communication code implementation

Hardware SPI communication is implemented by the system. We only need to operate the register and call the relevant function. For details, please refer to the MCU related documentation.

The software SPI communication code is implemented in lcd.c respectively, as shown in the following figure:

```
void spi_write_byte(u8 d)
{
    u8 val=0x80;
    while(val)
    {
        if(d&val)
        {
            LCD_SDI = 1;
        }
        else
        {
            LCD_SDI = 0;
        }
        LCD_CLK = 0;
        LCD_CLK = 1;
        val>>=1;
    }
}
```

If the transmitted data bit is 1, the SPI data pin is pulled high. When it is 0, the

SPI data pin is pulled low, one byte of data is transferred each time, the upper bit is first, and one bit of data is transmitted on each rising edge of the clock

Common software

This set of test examples requires the display of Chinese and English, symbols and pictures, so the modulo software is used. There are two types of modulo software: Image2Lcd and PctoLCD2002. Here is only the setting of the modulo software for the test program.

The **PctoLCD2002** modulo software settings are as follows:

Dot matrix format select **Dark code**

the modulo mode select **the progressive mode**

Take the model to choose **the direction (high position first)**

Output number system selects **hexadecimal number**

Custom format selection **C51 format**

The specific setting method is as follows:

<http://www.lcdwiki.com/Chinese and English display modulo settings>

Image2Lcd modulo software settings are shown below:



The Image2Lcd software needs to be set to horizontal, left to right, top to bottom, and low position to the front scan mode.